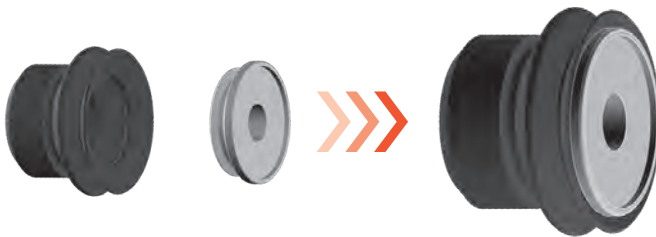


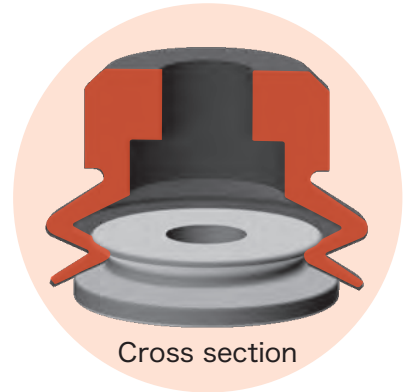
CORE Mark Free Core for PJG Cup



Attachment for PJG cup
Besides being mark free it also prevents deformation of thin work pieces and adhesion!



One touch mounting !
Easily mounting to the bellows part of cup (PJG series)



The material can be selected from PEEK, POM, SUS.

How to Order

CORE — 06 — S3

①

②

① Applicable Cup Size

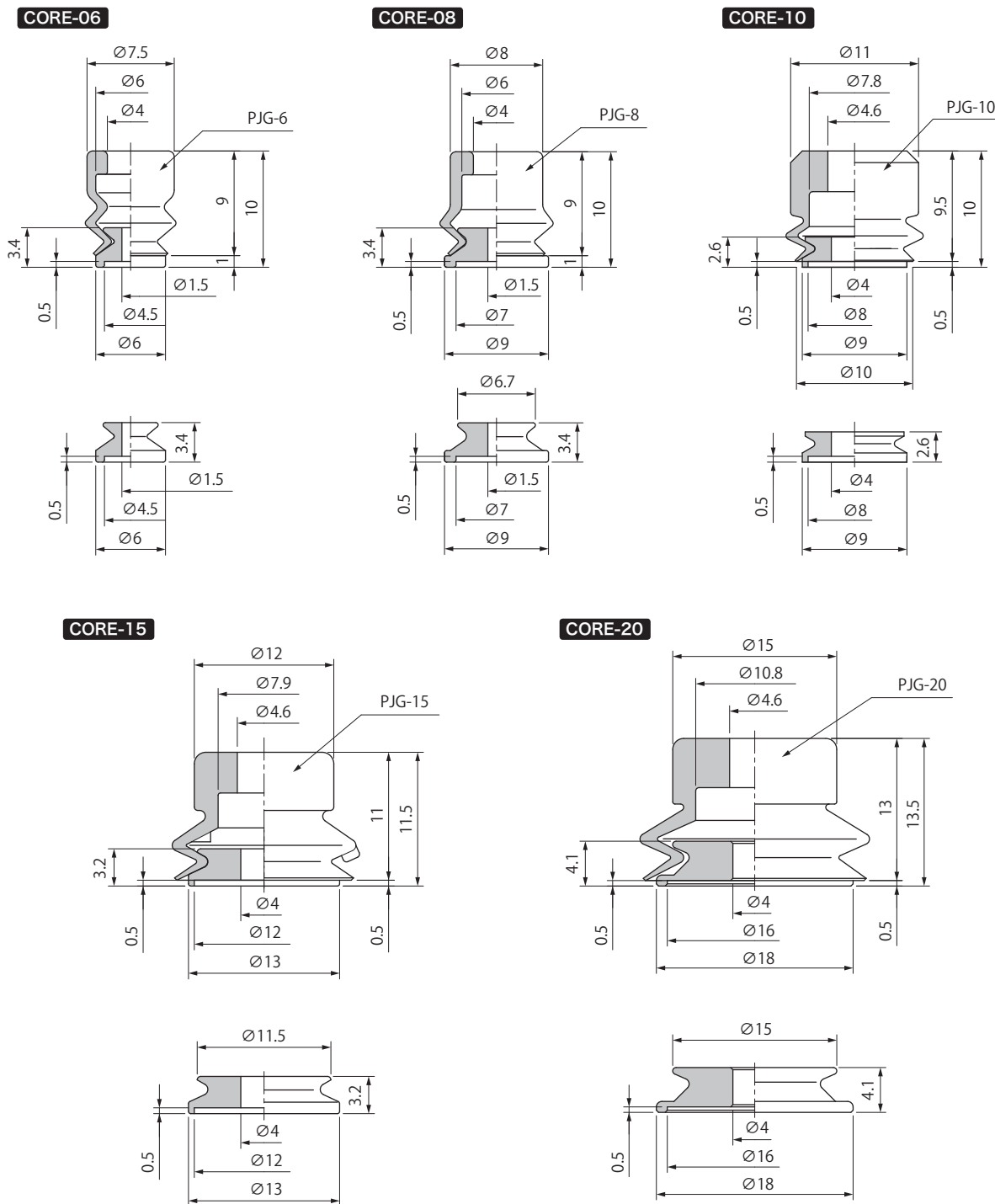
Symbol	Applicable cup size	Symbol	Applicable cup size
06	PJG-6	35	PJG-35
08	PJG-8	40	PJG-40
10	PJG-10	50	PJG-50
15	PJG-15	60	PJG-60
20	PJG-20	70	PJG-70
25	PJG-25	80	PJG-80
30	PJG-30		

② Material

Symbol	Material
S3	SUS303
PO	POM
PE	PEEK

Dimensions

(mm)



Weight

(g)

Model \ Material	S3	PO	PE
CORE-06	0.4	0.1	0.1
CORE-08	0.9	0.2	0.1
CORE-10	0.7	0.1	0.1
CORE-15	1.9	0.3	0.3
CORE-20	4.3	0.8	0.7

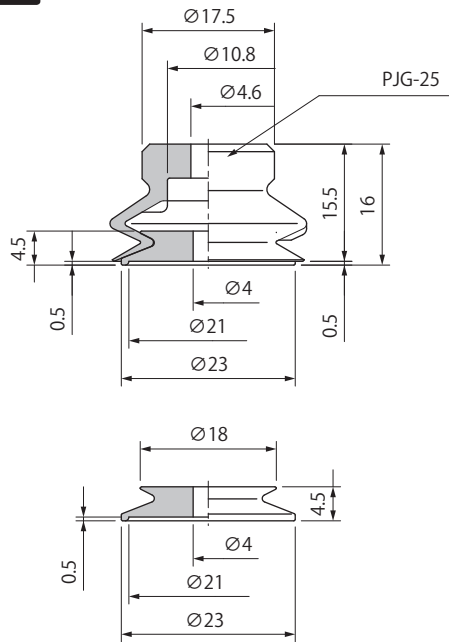
Symbol	Material
S3	SUS303
PO	POM
PE	PEEK

CORE Mark Free Core for PJG Cup

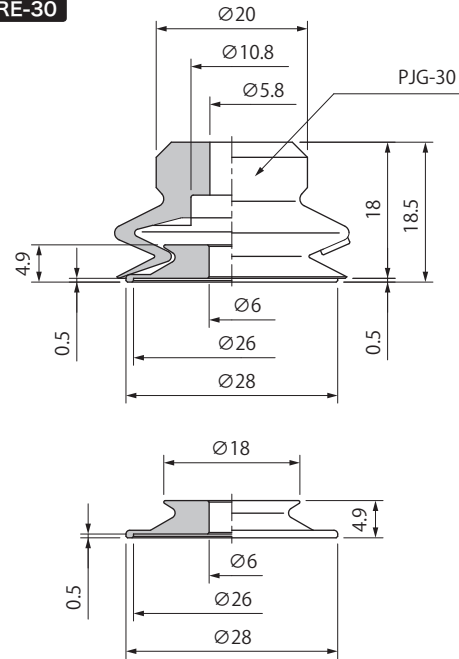
Dimensions

(mm)

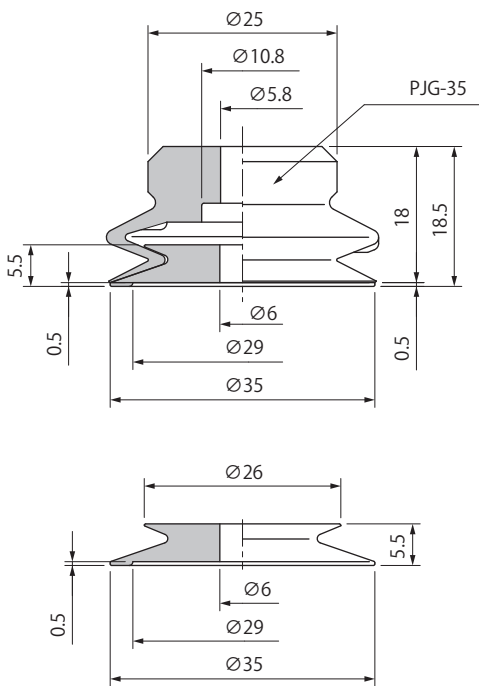
CORE-25



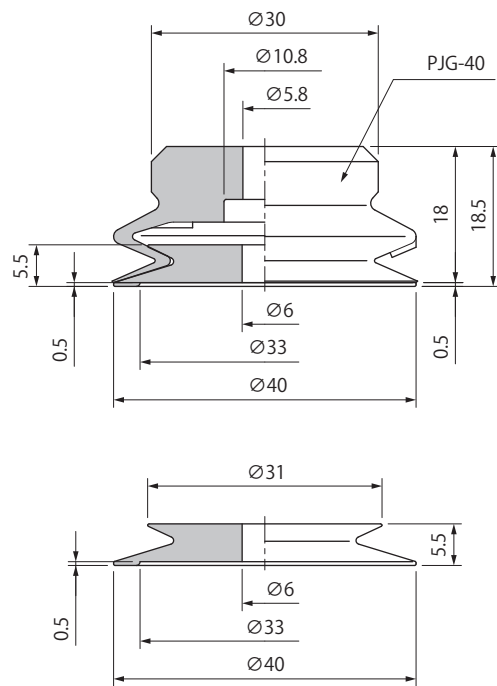
CORE-30



CORE-35



CORE-40



Weight

(g)

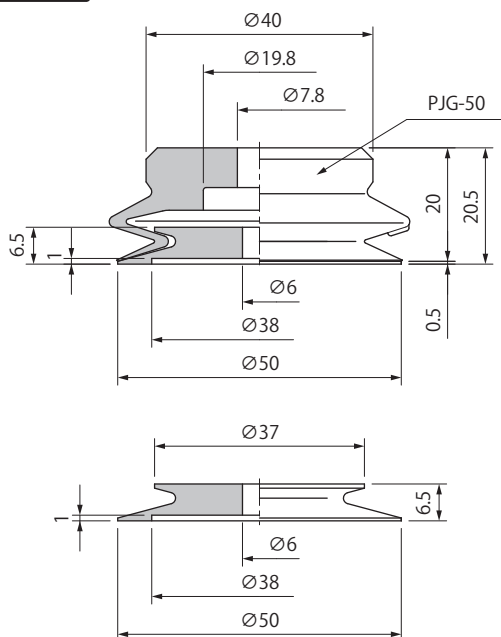
Model \ Material	S3	PO	PE
CORE-25	7.9	1.4	1.3
CORE-30	9.0	1.6	1.5
CORE-35	19.9	3.5	3.3
CORE-40	28.1	5.0	4.7

Symbol	Material
S3	SUS303
PO	POM
PE	PEEK

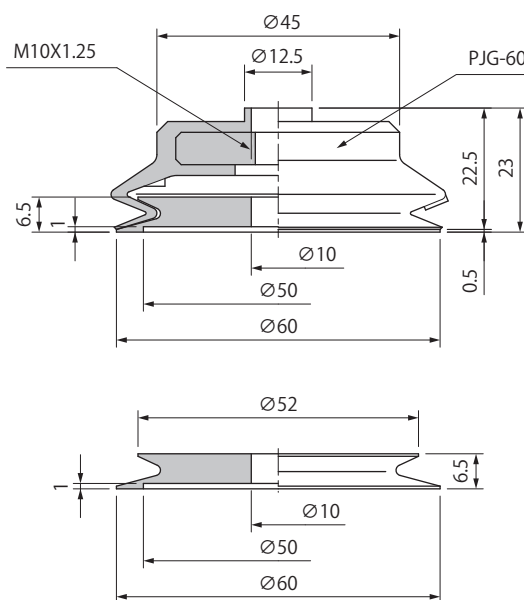
Dimensions

(mm)

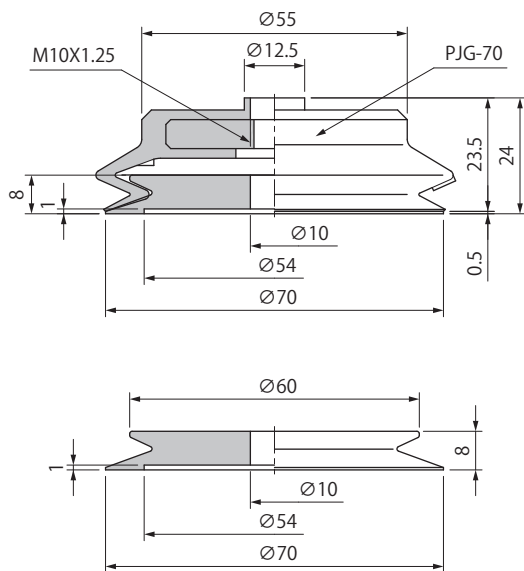
CORE-50



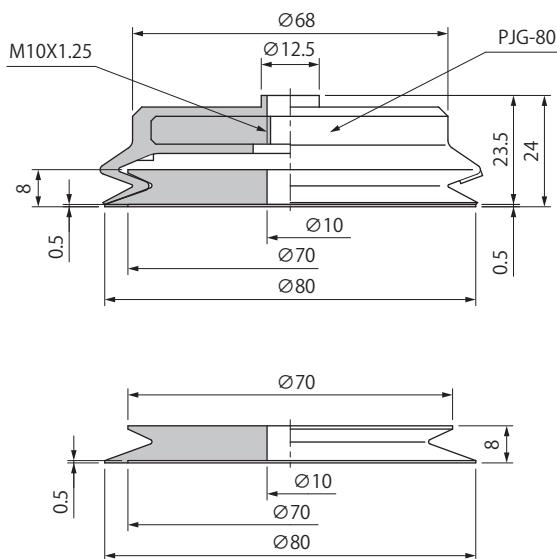
CORE-60



CORE-70



CORE-80



Weight

(g)

Model \ Material	S3	PO	PE
CORE-50	46.9	8.3	7.8
CORE-60	81.6	14.5	13.6
CORE-70	151.1	26.9	25.2
CORE-80	213.2	37.9	35.5

Symbol	Material
S3	SUS303
PO	POM
PE	PEEK