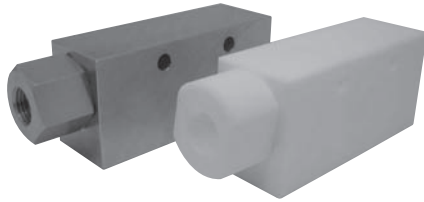


Standard vacuum ejector

Gas – Chemical proof CV CONVUM

(Made to order)

CONVUM



- Body and nozzle made of stainless material

SUS303 and SUS316

- For semiconductor equipments, machines

Suitable for gas, chemical suction

- All PTFE type also available

PTFE material is excellent against chemicals

How to order

CV – ① 10 ② H ③ S ④ T ⑤ S3 ⑥ G

| ① Nozzle diameter | |
|-------------------|------|
| 10 | φ1.0 |
| 15 | φ1.5 |
| 20 | φ2.0 |

| ② Max. vacuum pressure | |
|------------------------|--------|
| H | -87kPa |
| L | -53kPa |

| ③ Nominal pressure | |
|--------------------|---------|
| S | 0.5MPa |
| R | 0.35MPa |

Note: Combination LR is not available

| ④ Body material | |
|-----------------|--------|
| T | PTFE |
| S3 | SUS303 |
| S6 | SUS316 |

| ⑤ Nozzle material | |
|-------------------|--------|
| S3 | SUS303 |
| S6 | SUS316 |

Note: Combination LR is not available

| ⑥ Port thread | |
|---------------|-----------|
| N | N (NPS) |
| G | G (BSPP) |
| Blank | Rp (BSPP) |

Note: ①② applicable models

| ② | ③ | |
|---|---|---|
| | S | R |
| H | ○ | ○ |
| L | ○ | × |

Note: Specifications and dimensions are the same as of standard CV ejectors.

Note: Silencer is mounted on stainless and PTFE types.