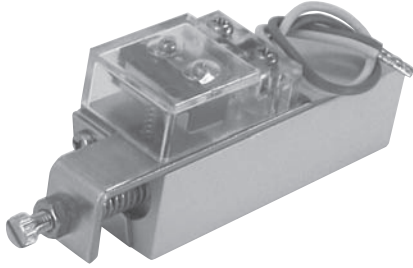


Mechanical vacuum switch CVA-V series



- Vacuum switch for CVA2 CONVUM ejector
- Mechanical vacuum switch

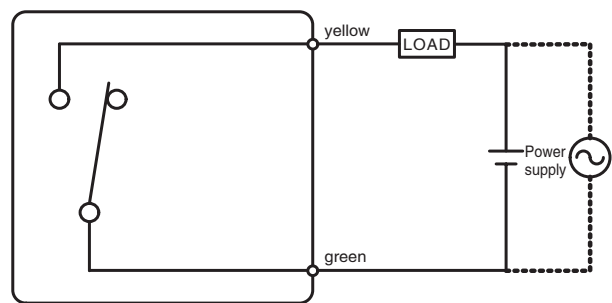
How to order

CVA - V

Specifications

Type	Unit	CVA-V
Fluid		Air (non corrosive, nonflammable gas)
Pressure range	kPa	-33.3 ~ -73.2
Proof pressure	MPa	0.5
Operating ambient temperature	°C	0 ~ 60
Operating humidity	%	35 ~ 85 RH(no condensation)
Hysteresis	kPa	4 ~ 13.3
Cable length	mm	100
Mass	g	135

Internal circuit diaphragm



Normally open

Electric characteristics

Descriptions		Unit	
Arrangement of contact			Reed type, Normal open(N.O)
Rated voltage		V	AC125, 250
Current load	AC125V	A	5
	AC250V	A	3

Dimensions

Unit : mm <inch>

