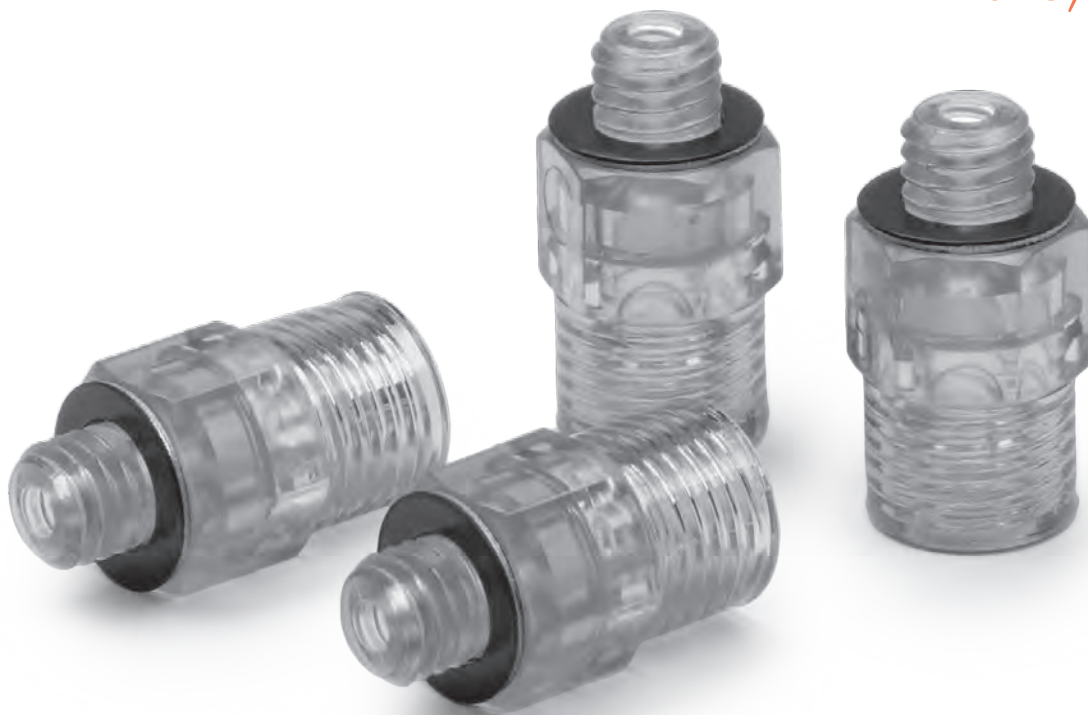


Miniature Vacuum In-line Filter

RoHS



Check the dirt with transparent body. Miniature size, direct mounting!

- Dirty condition of the element can be checked from the outside.
- Space savings, can mounted anywhere.

VFL-M5 series is for vacuum line only.

- ※Please use only for the vacuum line.
- ※To protect the vacuum equipment under the dust environment, please use on the line.

Precautions



■ **Tightening torque**

Tightening with excessive torque may cause the filter break, because of its resin material. Please attach with a maximum torque of 0.24N·m.

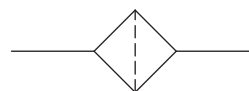
■ **Lateral load**

Because of its resin material, filter may break in case of excessive lateral load.

How to Order

VFL — M5

Symbol



Specifications

Description \ Model number	Unit	VFL-M5
Fluid		Air (vacuum), non-corrosive gas, non-flammable gas
Ambient temperature range	°C	0~60(No freezing)
Operating pressure range	kPa	-91.8 ~ 0
Withstand pressure	MPa	0.5
Port size		M5X0.8
Filtration	μm	37
Filtration area	mm ²	19
Suitable CONVUM nozzle size	mm	1.0 or less
Tightening torque	N · m	0.24
Weight	g	1

03
Other Equipments for Vacuum

VF

VFL

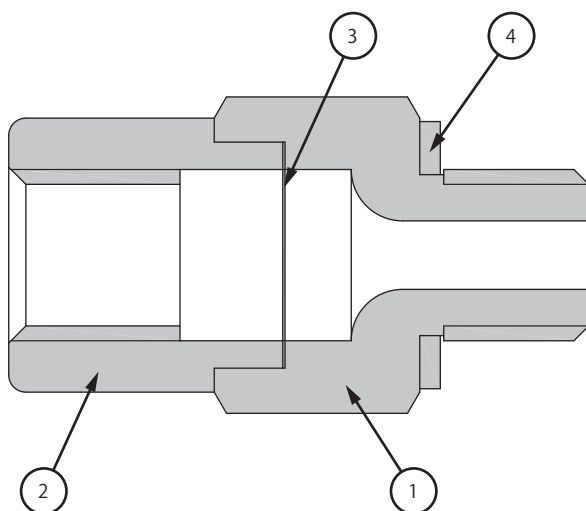
VFL-M5

FPV

MS

CH-01

Construction



Component Parts

No.	Parts name	Material
1	Body A	PA
2	Body B	PA
3	Element	PA
4	Gasket	-

Dimensions

(mm)

