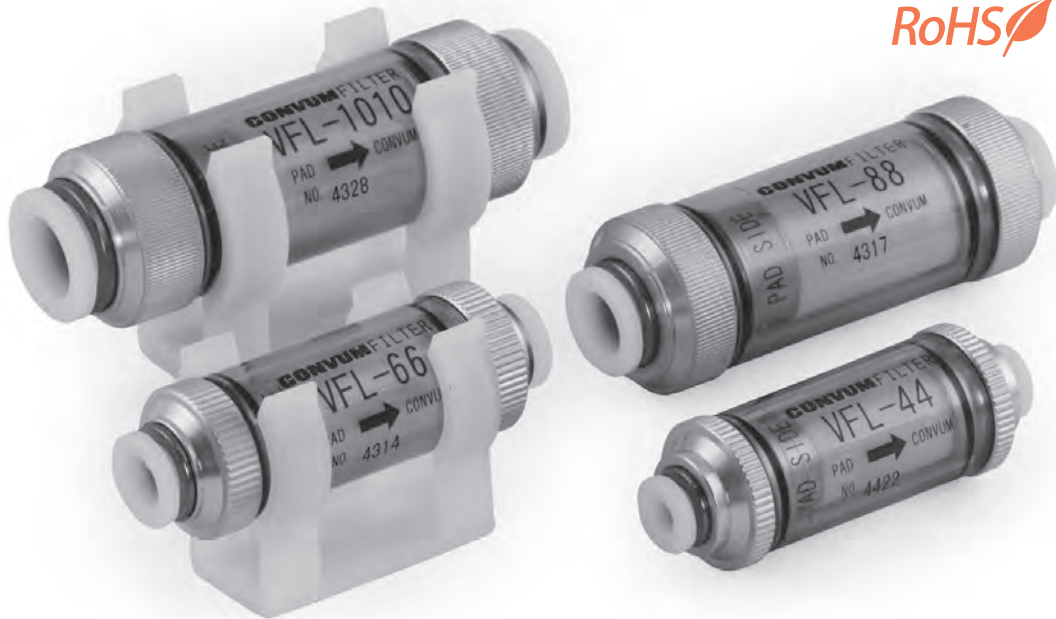


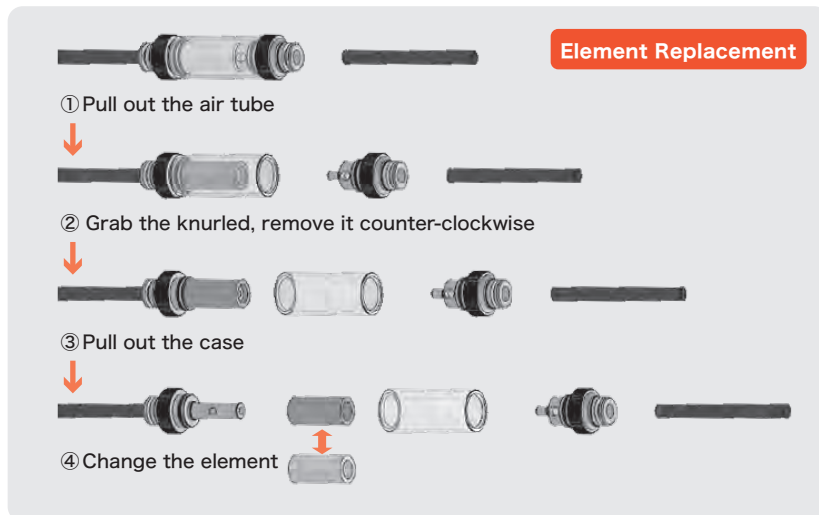
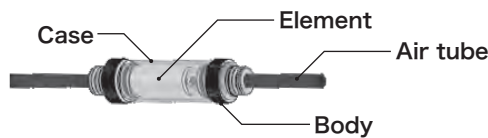
VFL Series

Vacuum In-line Filter



With push-in connector, easily removed. Check the dirt with transparent body!

- $\phi 4, \phi 6$ push-in connector built-in. Easily mount and remove the tube.
- Dirty condition of the element can be checked from the outside.



VFL series is for vacuum line only

※Please use only for the vacuum line.

※To protect the vacuum equipment under the dust environment, please use on the line.

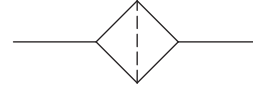
How to Order

VFL — 44

Applicable Tube O.D. (mm)

Symbol	Tube O.D
44	4
66	6
88	8
1010	10

Symbol



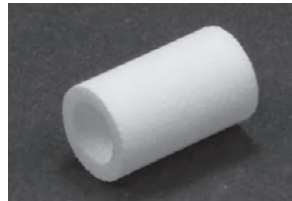
Maintenance Parts

• Element

VFL — 44 E

Applicable model

44	VFL-44/66
88	VFL-88/1010



• Filter kit (case, O ring)

VFL — 44 K

Applicable model

44	VFL-44
66	VFL-66
88	VFL-88
1010	VFL-1010



• Holder

VFL — 46 H

Applicable model

46	VFL-44/66
81	VFL-88/1010



03
Other Equipments for Vacuum

VF

VFL

VFL-M5

FPV

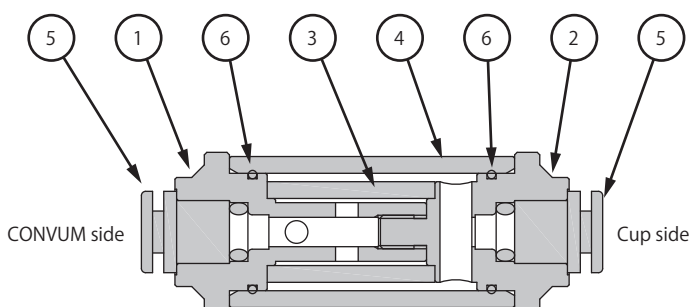
MS

CH-01

Specifications

Description \ Model number	Unit	VFL-44	VFL-66	VFL-88	VFL-1010
Fluid		Air (vacuum), non-corrosive gas, non-flammable gas			
Ambient temperature range	°C	0~60 (No freezing)			
Operating pressure range	kPa	-95.9~0			
Withstand pressure	MPa	0.5			
Applicable tube O.D.	mm	4	6	8	10
Filtration	μm	15			
Filtration area	mm ²	750		1256	
Suitable CONVUM nozzle size	mm	1.0 or less	1.5 or less	2.0 or less	
Weight	g	19	20	37	41

Construction



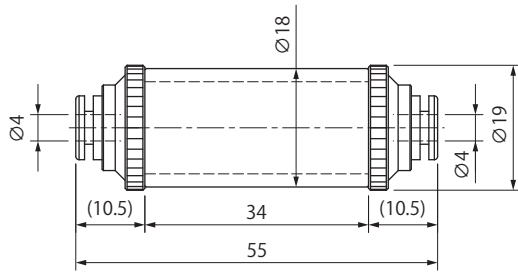
Component Parts

No.	Parts name	Material
1	Body A	Aluminium
2	Body B	Aluminium
3	Element	PVF
4	Case	PA
5	Connector	-
6	O ring	NBR

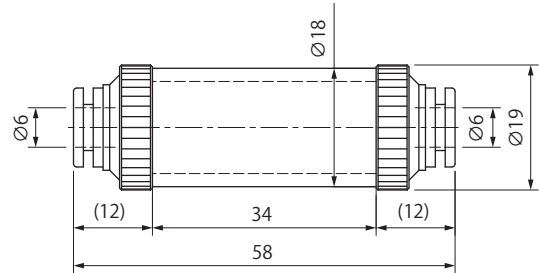
Dimensions

(mm)

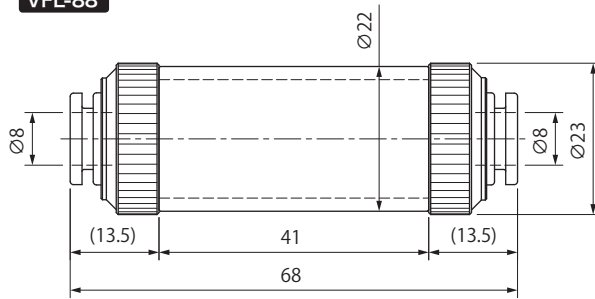
VFL-44



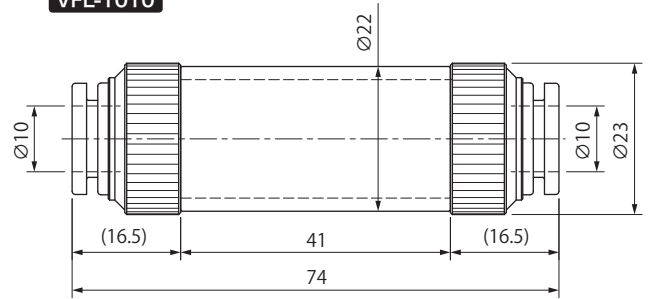
VFL-66



VFL-88

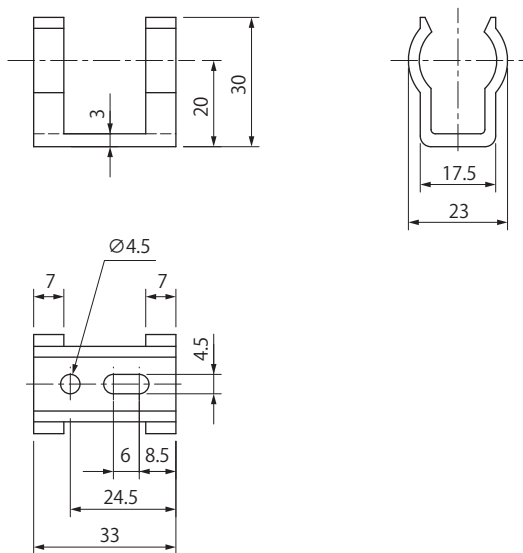


VFL-1010

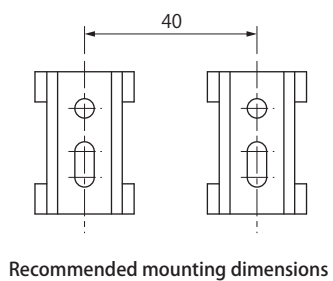
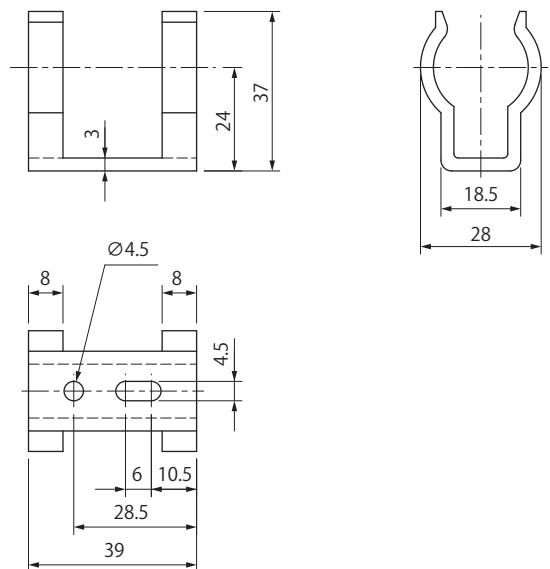


Holder

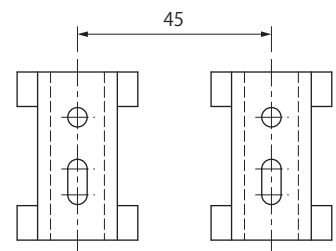
VFL-46H



VFL-81H



Recommended mounting dimensions



Recommended mounting dimensions